



# Bar-Ilan University

INFORMATION





## Contents

|                           |    |
|---------------------------|----|
| About Bar-Ilan University | 4  |
| Facts & Figures           | 5  |
| We are on the Map         | 7  |
| Key Areas of Study        | 8  |
| Student Services          | 12 |
| International Programs    | 18 |
| Scholarships              | 21 |
| Jewish Heritage           | 22 |
| Campus Life               | 24 |
| The Alumni Community      | 27 |
| Campus Map                | 28 |
| Shuttle Route             | 30 |



## About Bar-Ilan University



Bar-Ilan University, one of Israel's leading institutions of higher education, uniquely combines cutting-edge scientific research with education steeped in Jewish values and social responsibility. Thousands of students pursue their BA, MA and PhD degrees on our award-winning Ramat Gan campus, and MDs at our School of Medicine in the Galilee; many more are enrolled in certificate and enrichment programs, including the largest in-service teacher training program in Israel.

A microcosm of Israeli society, BIU's diverse student body includes both secular and religious; Jews and non-Jews; as well as new immigrants and international visitors. With tolerance and civility our operating code, the multicultural environment on campus provides a singular forum for free thought and exchange, open discussion and embracement of the "other."



## Facts & Figures

- 21,000 Academic Degree Students \***  
17,000 on Ramat Gan and Safed campuses and 4,000 at regional colleges
- 4,800 Non-Degree Students** in enrichment and certificate programs, continued education tracks and more
- 130,000 BIU Alumni** making their mark on the Israeli economy and society
- 8 Faculties** offering a wide range of academic disciplines in the Life Sciences, Exact Sciences, Medicine, Engineering, Social Sciences, Humanities, Jewish Studies, and Law
- 53 Departments & Interdisciplinary Study Programs**, including Translation and Interpreting Studies, Biotechnology, Conflict Resolution and Negotiation, Logistics, Gender Studies, Jewish Art, Information Studies, Hermeneutics & Cultural Studies, Optometry & Vision Science, and more
- 50 Research Centers & Institutes** in all disciplines
- 90 International Academic & Research Cooperation Agreements** in collaboration with the world's leading universities
- 300 Research Laboratories** equipped with state-of-the-art instrumentation
- 29 Libraries**
- 15 Clinics** in Law, Psychology, Social Work and Optometry offering practical assistance to local residents and students in need

\* As published by the Israeli Central Bureau of Statistics, 2016

## We are on the Map



The Bar-Ilan University campus is conveniently situated on Highway 4, easily accessible by car or public transportation from anywhere in Israel.

### Bus Lines

**From Tel Aviv:** 145, 199, 18, 350, 143, 43, 168, 70, 161, 61, 45, 68, 69, 168, 70, 161, 45

**From Petach Tikva:** 280, 180, 187, 136, 87, 164, 292

**From Rehovot/Lod:** 244, 139, 264, 318, 164

**From Jerusalem:** 190, 199, 400, 401, 425

**From Netanya/Raanana/Herzliya:** 564, 170, 505, 618, 640, 620, 564

**From Beersheva:** 669, 356, 355, 315, 317

**From Modi'in:** 58, 202, 201

There are 8 entry gates around campus, and 4 public parking lots just outside the campus, located on Jabotinsky St., Anna and Max Webb St., and at the Wohl Centre across the street from campus..

A free (and environmentally friendly) shuttle service operates on campus throughout the day, ferrying students, faculty and visitors around the campus.

See Campus Map and Shuttle Route on pages 28-31.



## Key Areas of Study

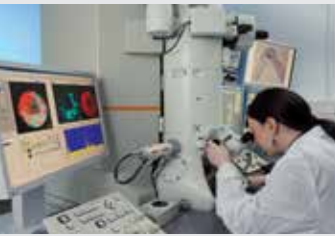
### Science, Technology and Medicine:

The **Faculty of Exact Sciences** offers undergraduate and graduate study tracks in Chemistry, Physics, Mathematics, Computer Sciences and Biophysics.

The **Mina and Everard Goodman Faculty of Life Science** offers undergraduate and graduate programs in Optometry & Vision Science, a Genomics & Biomedical Informatics (BioMedIn) program for MD's and researchers, and undergraduate and graduate studies in Biology, with such majors as Bioinformatics and Biotechnology.

The **School of Engineering**, a leader in high-tech R&D, offers two key undergraduate and graduate majors – Electrical Engineering and Computer Engineering.

The **School of Medicine in the Galilee** offers three study tracks: MSc in Medicine (with thesis), MD, and MD/ PhD training for outstanding scientists in medical research.



**Research Centers:** Among BIU's prominent research centers in these fields are the Bar-Ilan Institute for Nanotechnology and Advanced Materials (BINA), and the Leslie and Susan Gonda Multidisciplinary Brain Research Center, which also offers an undergraduate program.





## Key Areas of Study

### Law, Society, Culture and Judaism:

The **Faculty of Law** offers LLB and LLM programs, graduate law studies for non-legal practitioners, and a graduate program in Commercial and International Law, focusing on China and the Far East.

The **Faculty of Social Sciences** offers a variety of study tracks for all degrees, including Management, Logistics, Psychology, Sociology & Anthropology, Organizational Consulting, Economics, Political Studies, Radiology & Imaging, Geography & Environment, Education, Social Work, Business Administration, Accounting, Communication, Criminology, as well as unique graduate programs in Clinical Criminology and Social-Rehabilitation Criminology.

The **Faculty of Humanities** has a Department of Translation & Interpreting Studies. Other departments include Philosophy, Comparative Literature, Information Science, English Language, Literature & Linguistics, General History, Arabic, French Studies, Classical Studies, and Music. The faculty also offers an undergraduate program in multidisciplinary Asian studies, and the only Creative Writing graduate program in Israel.

The **Faculty of Jewish Studies**, the largest in the world, embraces the fields of Jewish Thought, Bible Studies, Talmud & Jewish Law, Jewish History & Contemporary Jewry, Hebrew & Semitic Languages, Jewish Art, Literature of the Jewish People, Land of Israel Studies & Archaeology, and Middle Eastern Studies. The faculty also offers an undergraduate multidisciplinary program in Jewish Studies, and operates the School of Basic Jewish Studies.



**Research Centers:** BIU boasts several prominent research centers, whose work is highlighted in the media and influences public discourse in Israel. These include the Begin-Sadat (BESA) Center for Strategic Studies, the Aharon Meir Center for Banking, the Center for Jewish and Democratic Law, and the Center for Media and Law.

### Interdisciplinary Graduate Studies

Aligning itself with global trends in academia, BIU offers a variety of interdisciplinary graduate study tracks in areas such as Science, Technology & Society, Conflict Resolution, Management & Negotiation, Gender Studies, Hermeneutics & Cultural Studies, and Multidisciplinary Brain Research.

## Student Services

---



**The Student Administration Office** assists students with their administrative needs throughout their academic studies. The office incorporates several units, including Admissions, the Registrar, the Archives and the Friedman Family Student Information Center.

Tel: 03-531-7000, Email: [biu.9392@biu.ac.il](mailto:biu.9392@biu.ac.il)

Office Hours: Sunday-Thursday 8:30-18:00; Friday 8:30-12:30

**The Dean of Students Office** promotes student welfare on campus, providing a range of services designed to help them address personal, financial and social needs. Together with the Student Union, the office operates frameworks for students' volunteerism and involvement in the community. The Dean of Students Office also oversees matters relating to students who are new immigrants and on tourist visas, and helps re-schedule exams for students absent from studies due to IDF reserve duty.

Building 508, Tel: 03-531-8652, Email: [students.services@biu.ac.il](mailto:students.services@biu.ac.il)

Office Hours: Sunday, Tuesday 11:30-14:00; Monday, Thursday 8:30-10:30

**The Preparatory Program (Mechina)** equips applicants who are required to complete their Israel matriculation exams (*Bagrut*) before enrolling in university-level courses, with training in Mathematics and Physics, Engineering and Exact Sciences, Social Sciences, Humanities and Jewish Studies.

Tel: 03-531-7956/406 or 535-4079

For ages 30+ without matriculation: 03-738-4486

**The Maria and Joel Finkle Student Counselling Center** is the on-campus mental health center which helps students with emotional issues. Bar-Ilan also offers support groups and workshops at a small fee for students in need of support.

Building 407, Tel: 03-531-8450. Office hours:

Monday-Wednesday, Friday 8:30-15:00; Thursday, 8:30-13:30



**The Sybil Wigdor Social Involvement Unit** provides a range of services, such as tutoring and assistance to students with mental, physical and learning disabilities, and academic support for students from the periphery. The unit also operates a social involvement project which encourages BIU students to volunteer in the community at large.

Building 407, Tel: 03-531-8491

Office Hours: Sunday, Tuesday 11:30-14:00; Monday, Thursday 8:30-10:30

Email: [meoravut.unit@biu.ac.il](mailto:meoravut.unit@biu.ac.il) or [eti.katav@biu.ac.il](mailto:eti.katav@biu.ac.il)

## Student Services

---

**Dormitories and Student Housing** on campus and off are allocated by the Dean of Students Office and the Student Union. Currently, an extensive dormitory construction and renovation project is underway on campus that will provide new and improved student housing options in the coming years.

**The Academic & Career Counseling Unit** operates under the auspices of the Dean of Students, to service all students.

Building 403, Room 61, Tel: 03-531-7024

Email: [yeutz.ac@biu.ac.il](mailto:yeutz.ac@biu.ac.il)

All appointments must be scheduled in advance.



**The School of Graduate Studies** – the only one of its kind in Israel – offers MA and PhD students a "one stop shop," providing support, career counseling and guidance from registration to graduation and as alumni. The school assists students in writing research proposals, theses and in obtaining scholarships and fellowships, and even helps graduates find positions in their professions or in academia.

Building 403, Tel: 03-531-8572/ 8524 (Masters Students)  
03-531-8548/ 8556 (PhD Students)

Office hours: Sunday-Thursday 10:30-11:30; 13:30-14:30

**The Student Union** cares for students' social and financial needs, organizes student events, shows, fairs and happenings. Providing students with information about private tutors, translators, exams and class notes, scholarships and job offers, the union also organizes social activities and workshops.

Building 107, Tel: 03-534-3666

Email: [pniot@bis.org.il](mailto:pniot@bis.org.il)

**Digital Information Stations** across campus enable students to view their personal digital records and receive information at their own convenience. The info stations are located in Buildings: 105, 107, 212, 304, 306, 401, 402, 404, 502, 504, 505, 507, 604, 605, 1004, 1104

**Free Computer Access** is available around the clock with internet services and printers (operated by rechargeable copy cards). These computers are located in the Student Union.

Building 107, 7:00-20:00

More computers are available in the computer labs in the following buildings: 212, 404, 410, 504, 505, 604, 605, 901, 1004, 1005. Additional computer stations are located in most libraries on campus and in the University's Internet Café, Building 405.







## Student Services

**Copying Services** (for a fee) are available in every building on campus, in addition to the Advanced Service Center for photocopying, printing, binding and graphic design services. The Center is located in **Building 405 C** across from Building 403, and operates Sunday-Thursday 8:00-17:00, Tel: 03-531-7487 [barilan@mafilprint.co.il](mailto:barilan@mafilprint.co.il)

**Academon Bookstore** sells academic texts, fiction books, and office supplies, as well as BIU merchandise. Student Union Building 107, Tel: 03-635-9912/3 Sunday-Wednesday 8:00-18:30; Thursday 8:00- 18:00; Friday 8:00-12:30

**Israel Post Office** is located in the Administration Building 402 Sunday-Thursday 8:30-14:00

**Bank (Mizrahi-Tefahot)** – Tuition and bills may be paid, and withdrawals and deposits made at this bank branch, which is located on campus, to the right of the main entry gate (Picciotto Family Gate, 1). Sunday, Tuesday, Thursday 8:30-14:00 Monday, Wednesday 8:30-13:30; 15:30-17:00 Friday and Holiday eve 8:30-12:00. Tel: \*5080 or 03-737-1222

**Campus Cafeterias, Cafés and Restaurant** offering nutritious dairy or meat meals, as well as vegetarian and vegan dishes are located in **Buildings: 206, 306, 403, 409, 1004**

**Grocery** - Fresh foods and produce, sandwiches, salads, microwave meals, pastries, cold and hot beverages. Students can use the store's microwave and toaster oven. Building 107, Sunday-Thursday 7:30–20:00

**Shoemaker** - Repairs shoes, clothes, zippers and bags. Sells batteries, watch straps, shoeshines and copies keys. Building 107, Sunday-Thursday 9:00-16:00.

**The Gradel & Weisfeld Day Care Centre** provides quality, affordable on-site child care for BIU students with young children from three months to three years.

For more information refer to [barilan@memunah.org.il](mailto:barilan@memunah.org.il) or Tel: 03-535-4456



## International Programs

Bar-Ilan University offers a wide range of undergraduate, graduate, and doctoral degree programs taught entirely in English. Post high-school, academic preparation, and intensive Hebrew language instruction programs are also available, as well as specialized summer seminars and short-term courses.

**BIU's International Office** supports the advancement of academic programs and partnerships directed towards foreign students, faculty, and staff, and fosters internationalization in teaching and learning.

**Wengrowsky Family "Lev Hacampus" Visitors Center & Observatory,**  
Building 307, Room 9, Tel: 03-738-4246  
Email: [international.office@biu.ac.il](mailto:international.office@biu.ac.il)

**IMBA** – the International MBA program offers a year-long program, enabling English-speaking students to combine academic studies with work, and a study tour abroad  
[imba.biu.ac.il/](http://imba.biu.ac.il/)

**The Shaindy Rudoff Graduate Program in Creative Writing** (fiction and non-fiction), the only one of its kind in Israel, enables student to improve their writing skills and become published authors or poets.  
[english.biu.ac.il/cw-about-us](http://english.biu.ac.il/cw-about-us)



## International Programs

**International BA** – BIU currently offers three undergraduate tracks in Economics, Communication, and Interdisciplinary Social Sciences. Other tracks might be added at a later date and/or specializations changed.

For further information, Email: [intl.office@biu.ac.il](mailto:intl.office@biu.ac.il)

Additional programs offered in English include graduate studies in English Literature, Linguistics, Translation and Interpretation.

Contact specific department at [www1.biu.ac.il/en](http://www1.biu.ac.il/en)

### **The BIU-YU Summer Science Research Internship Program**

enables select undergraduates from American universities to work alongside leading BIU scientists in one of the state-of-the-art research laboratories.

[www1.biu.ac.il/BIU-YU](http://www1.biu.ac.il/BIU-YU)

### **The Identity-Based Conflict Resolution Summer Program**

uniquely affords international students with first-hand knowledge in the conflict management and resolution aspects of the Middle East.

Email: [summer.CRidentity@biu.ac.il](mailto:summer.CRidentity@biu.ac.il)

## Scholarships

BIU offers a multiplicity of scholarships to undergraduate and graduate students, among them: need-based BA scholarships, merit- and need-based Masters of Achievement graduate scholarships, scholarships for promising undergraduate students who score in the top one percentile in their psychometric and matriculation exams, scholarships for IDF combat vets, Doctoral Fellowships of Excellence for outstanding PhD candidates, and more.

Scholarships and Loans Division,  
Building 304, Room 7

Tel: 03-531-8501/ 8372

Email: [milgot.office@biu.ac.il](mailto:milgot.office@biu.ac.il).

Office hours:

Sunday, Tuesday 11:30-14:00

Monday 8:30-10:30; 15:00-17:00

Thursday 8:30-10:30 (no office hours Wednesday or Friday)



## Jewish Heritage



**Office of the Campus Rabbi** is responsible for a wide range of activities involving spiritual and religious life on campus, among them special Shabbat events, Torah lessons, and lectures and holiday-related activities. The Office of the Campus Rabbi provides a new service – Marriage Registration. In addition, the Campus Rabbi prepares couples for marriage and answers Halachic questions.

Building 204, Room 205, Tel: 03-531-8372,

Email: [campusrabbi.office@biu.ac.il](mailto:campusrabbi.office@biu.ac.il)

**The Ludwig and Erica Jesselson Institute for Advanced Torah Studies** enables BIU students to combine intense, high-level Torah scholarship with their diverse academic training. The Institute's Beit Midrash (for men) and Midrasha (for women) offer courses for students of all religious backgrounds, and award academic credits and scholarships.

The **Beit Midrash** – Beit Shaul Building 411

The **Midrasha** – Beit Yehudit Building 405

(During Academic Year 2016-2017 Midrasha classes will be held in Building 411 due to renovations).



**Synagogues** – Beautiful synagogues may be found in the Ludwig and Erica Jesselson Institute for Advanced Torah Studies Beit Midrash, Building 411, and in the Nagel Jewish Heritage Center, Building 507. Daily *minyanim* are held around campus. Specific information about prayer times can be found in the Campus Rabbi's website and on campus message boards.





## Campus Life

The BIU **Student Union** ensures the richness and vibrancy of campus life. It organizes a weekly **pub, student events, sports tournaments, concerts, fairs and workshops** (e.g., Chocolate Night, Movie Night, Sushi Night).

On weekends the Student Union holds **Shabbat Campus** events, featuring guest lectures and festive dinners for students and local residents. This project is co-sponsored by the Office of the Campus Rabbi.

A **Flea Market** with jewelry, clothing and book stands is held thrice weekly on campus, and once a month, a massive party "HafsaCampus" (Campus Break) is held on the campus lawns, with music and mingling.



A Co-ed **Evening Beit Midrash** for young men and women is held twice weekly in the Midrasha and includes lectures on hot-button Torah issues, discussions and *hevruta* learning. [www.biubogrim.org.il/eng](http://www.biubogrim.org.il/eng)

Every Thursday, the Campus Rabbi and Student Union provide students with a taste of Shabbat at the **Kabbalat Shabbat** on the campus lawns with Cholent, a *Dvar Torah* and Jewish music. The Campus Rabbi also holds holiday events and fairs on campus.





## The Alumni Community

BIU is proud of its 130,000 alumni, many of whom serve in high ranking positions in industry, finance, security, education and public sectors in Israel and abroad.

BIU views its alumni as an integral part of its development and advancement and continues to maintain contact with them long after their graduation.

The Alumni Community operates the alumni websites, Facebook and LinkedIn pages, and updates alumni through a monthly newsletter, inviting them to social and academic events. BIU also encourages its alumni to stay in touch with the university and with their classmates in order to network. Alumni are updated about professional conferences, job fairs and reunions, and are groomed to be ambassadors of good will for BIU as well as future students and philanthropists.

[www.biubogrim.org.il/eng](http://www.biubogrim.org.il/eng)



Bar-Ilan Graduates



Bar-Ilan Graduates



[biubogrim.org.il](http://biubogrim.org.il)



## BUILDINGS, FACILITIES & PARKS ON CAMPUS

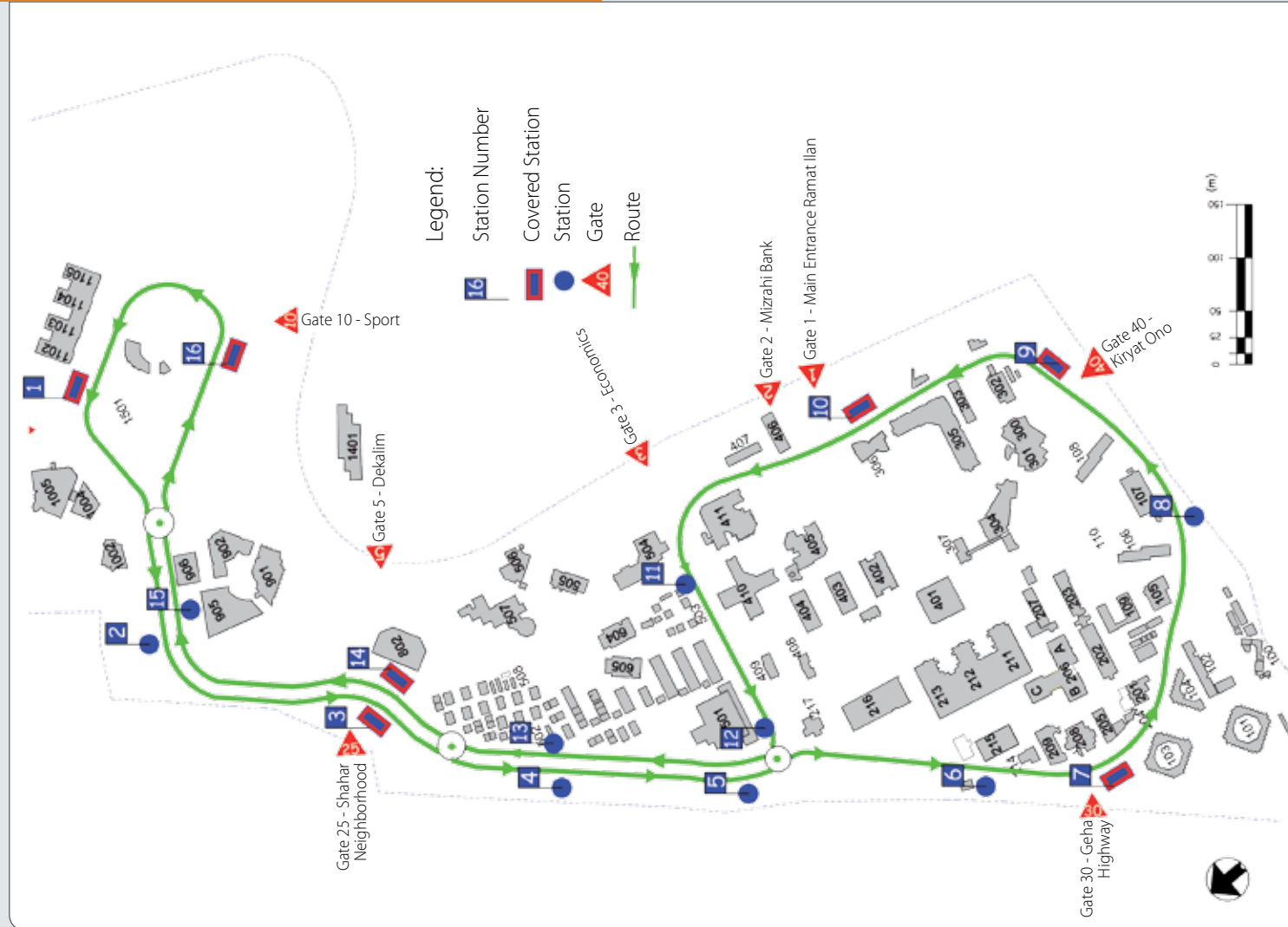
- 100 Research Center
- 101 The Sherman Dormitory
- 102 The Rappaport Microbiological Laboratories
- 103 The Nessim D. Gaon Dormitory
- 104 The Wolfson Dormitory
- 105 The Robert Asseraf Exodus Classroom Building
- 106 The Muskovitz – Pershin Dormitory
- 107 The Sisselman Student Building
- 108 The Stollman Dormitory
- 109 The Lauterman Building
- 110 The Bob Shapell Park
- 201 The Chaim & Rose Fraiman Environmental Biology & Male Fertility Building
- 202 The Physics Research Institute
- 203 The Stern Physics Building
- 204 The Gonda (Goldschmied) Medical Diagnostic Research Center
- 205 The Kunin-Lunenfeld Life Science Center
- 206 The Leslie and Susan Gonda (Goldschmied) Nanotechnology Triplex
- 207 The Harry Carpel Chemistry Building
- 208 The Marilyn Finkler Cancer Research Center
- 209 The Jack & Pearl Resnick Institute of Advanced Technology Building
- 211 The Ben & Bella Lechter Chemistry Building
- 212 The Suissa Life Science Building
- 213 The Mexico Building for Social Sciences
- 214 The Jerome Schottenstein Cellscan Center For Early Detection of Cancer
- 215 The Motek & Miriam Kinderlerer Energy Center
- 216 The Spiegel Mathematics & Computer Center
- 217 The Aliza & Menahem Begin Building
- 300 Isidor and Ida Locker Complex
- 301 The Shimshon & Chana Feldman International Conference Center
- 302 Logistics
- 303 Maintenance
- 304 The Pollack Lecture Halls
- 305 The Earl & Jennie Lohn Law & Commerce Building
- 306 The Jeanne & Maurice Benin Real Estate Law Wing
- 307 The Wengrowsky Family "Lev Hacampus" Visitors Center and Observatory



## BUILDINGS, FACILITIES & PARKS ON CAMPUS

- 401 The Wurzweiler Central Library
- 402 The Stollman Administration Building
- 403 The Charles Grosberg Education Building
- 404 The Charles Wolfson Hall Of Humanities
- 405 The Midrasha for Women
- 406 Mizrahi-Tefahot Bank (UMTB)
- 407 The Maria Finkle & Ruth Rackman Building
- 408 The Abraham Krok Satellite School of Education
- 409 The Solomon Krok Faculty House
- 410 The Rappaport Faculty of Jewish Studies Building
- 411 Jesselson Institute for Advanced Torah Studies
- 501 The Sobell Sports Center
- 502 Classrooms & Offices
- 503 Classrooms & Offices
- 504 The S. Daniel Abraham Center for Economics & Business
- 505 The Aaron & Rachel Dahan Exodus Classroom Building
- 506 The Gruss / Albert Hubert Dormitory
- 507 The Jack & Gitta Nagel Family Jewish Heritage Center
- 508 Offices
- 604 The Mordecai & Monique Katz Interdisciplinary Studies Building
- 605 The Jerome L. Stern Family Graduate Studies Building
- 801 The Peter and Alike Rzepka Twelve Tribes Plaza
- 802 The Gradel & Weisfeld Day Care Centre
- 901 The Leslie & Susan Gonda (Goldschmied) Mutidisciplinary Brain Research Center
- 902 Anna & Max Webb and Family Psychology Building
- 905 Jim Joseph Education Building
- 906 Energy Center
- 1002 Beit Harav Jakobovits – The Shamoon Centre for the Study of Philosophy, Ethics and Jewish Thought
- 1004 The Fred & Barbara Kort Language Studies Building
- 1005 The Marcus & Ann Rosenberg Music Building
- 1102 Mina and Everard Goodman Computer Engineering Building
- 1103 Dr. Mordecai and Dr. Monique Katz Information Technology Building
- 1104 Aharon and Rachel Dahan Electronic Technology Building
- 1105 Marc Rich Bio-Engineering Building
- 1401 The Wohl Centre
- 1501 The Dahan Family Unity Park
- 1502 The Lilly Shapell Central Promenade

## SHUTTLE ROUTE



Bar-Ilan University

\* on the web: [www.biu.ac.il](http://www.biu.ac.il)

\* on Facebook, LinkedIn, Instagram

Contact:

Bar-Ilan University

Ramat Gan 5290002, Israel

\* Tel: 972-3-531-8111

\* Email: [biu9392@mail.biu.ac.il](mailto:biu9392@mail.biu.ac.il)

